

Backgammon

Guide Magazine

WORLDS FAIR
TOURNAMENT

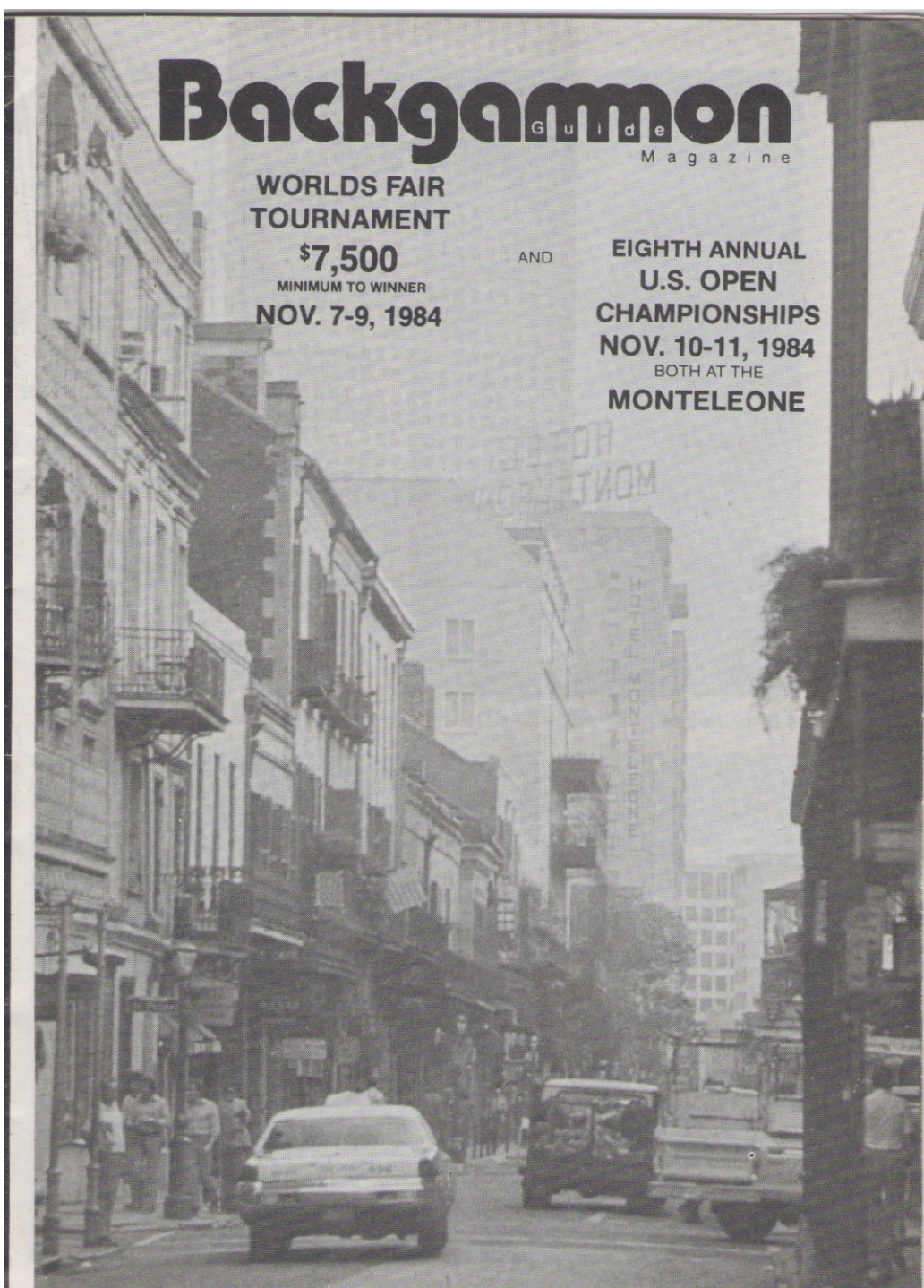
\$7,500

MINIMUM TO WINNER

NOV. 7-9, 1984

AND

EIGHTH ANNUAL
U.S. OPEN
CHAMPIONSHIPS
NOV. 10-11, 1984
BOTH AT THE
MONTELEONE



NEW ORLEANS



Sam and the late Fleming (Bud) Clardy



Sheraton-Yankee Clipper Hotels

SHERATON HOTELS & INNS, WORLDWIDE
1140 SEABREEZE BOULEVARD
FORT LAUDERDALE, FLORIDA 33316
305/524-5551



THE SHERATON YANKEE CLIPPER, Fort Lauderdale's famous landmark hotel launched magnificently on the shores of the sparkling Atlantic. A resort complex of four buildings offering: three freshwater swimming pools, tennis, fine dining, three poolside bars and two indoor cocktail lounges with entertainment nightly — everything you'd expect from a great resort, and more!

Marguerite (Sam) Clardy invites you to attend the

BUD CLARDY

MEMORIAL TOURNAMENT

FRI-SAT, OCT. 26-27, 1984

&

THE BIG DADDY

JACK-POT

SUNDAY, OCT. 28, 1984



Sheraton-Yankee Clipper Hotels

SHERATON HOTELS & INNS, WORLDWIDE
1140 SEABREEZE BLVD., FORT LAUDERDALE, FLORIDA 33316 305/524-5551

BUD CLARDY MEMORIAL

Fri. 8 P.M. - Registration

9 P.M. - Start of Play, Random Draw

Anyone unable to attend Friday may start anytime Saturday NOON to 5 P.M. Preliminary qualifying sessions. Staggered starting times. Advance registrations are not accepted. Contestants should register when they are available for play on Fri. or Sat. Whichever day or time is most convenient. Early starters have more opportunities to re-enter. SECOND CHANCE re-entries is a feature which enables those eliminated in the preliminary rounds another chance at all the top prizes.

SAT. 7 P.M. PLAYOFFS — commence after re-draw of qualified players and auction. Play will continue to conclusion

| | Open | Advanced | Intermediate | Novice |
|--------------|------|----------|--------------|--------|
| Entrance Fee | 200 | 100 | 60 | 30 |
| re-entry | 80 | 30 | 20 | 10 |

50% TO PLAYERS POOL

100% of Initial Entrance Fees returned. Winner 60%, Finalist 20%, Semi-Finalist (2) 10% Each Advanced, Intermediate and Novice prize distribution determined by number of entrants. No consolations. Mandatory one-time \$10/person charge to cover coffee, tax, and breakfast

BIG DADDY JACK-POT

Sunday - Noon — Registration

Sunday 1 PM — Play commences, conventional format, no re-entry

Sunday 2 PM — Consolations for losing players

6 PM — Doubles Tournament (\$100 per team)

Open \$200 Advanced \$100 Int. \$60 Novice \$30 (85% return)
Main Event 80%, Cons. 20%, Winner 80%, Finalist 20%

INTERNATIONAL BACKGAMMON ASSOCIATION MEMBERSHIP CATEGORIES

Life \$100 • One Year Regular \$20 • Six-Month Trial \$10
Board fee for players not registered in any event: \$10 per day.

Breakfast served Daily till 11:30 A.M.

DIRECTIONS: I-95 to St. R. 84 East to Beach

FLY TO FT. LAUDERDALE AIRPORT

TAXI TO YANKEE CLIPPER HOTEL

TOURNAMENT HOTEL RATES — Single or Double \$39 per room

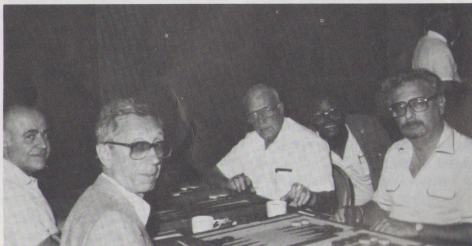
In U.S.: 800-325-3535



Al Hodis vs. Ron Glantz and Bob Voelker against Bob Bishop.



Rosalie Frank, Murial Rich and Randi Sacher.



Ed Goldstein playing Lowell Cushman, Hranti Isbenjan vs. Mike Valentine as Bob Hill smiles.

NOTE: Tuesday, Nov. 6, Election Day — Vote

1984 Worlds Fair

8th ANNUAL

TOURNAMENT

\$7,500

MINIMUM TO WINNER

AND

U.S. OPEN

BACKGAMMON CHAMPIONSHIPS

WED-FRI, NOV 7-9, 1984

SAT-SUN, NOV 10-11, 1984

The Monteleone

214 Royal Street, New Orleans, LA 70140

1984 WORLDS FAIR TOURNAMENT

WED. 8 P.M. to Midnight

THURS. 2 P.M. to Midnight

FRI. Noon to 6 P.M.

Preliminary qualifying sessions. Staggered starting times. Advance registrations are not accepted. Contestants should register when they are available for play on Wed., Thurs., or Fri. Whichever day or time is most convenient. Early starters have more opportunities to re-enter. SECOND CHANCE re-entries is a feature which provides those eliminated in the preliminary rounds another chance at all the top prizes.

FRI. 9 P.M. PLAYOFFS — commence after re-draw of qualified players and auction, benefiting (The Farm School). Play will continue to conclusion.

| | Open | Advanced | Intermediate | Novice |
|--------------|------|----------|--------------|--------|
| Entrance Fee | 300 | 150 | 80 | 40 |
| re-entry | 120 | 40 | 20 | 10 |

50% TO PLAYERS POOL

100% of Initial Entrance Fees returned to eventual winners:

\$7,500 Minimum to Winner. Balance divided proportionately so as to effect the following.
Winner 50%, Finalist 20%, Each Semi-Finalist (2) 10%, each Quarter Finalist (4) 2%, Womens Prize 2%

Advanced, Intermediate and Novice prize distribution determined by number of entrants. No consolations

Doubles Tournament (Limited to 32 Teams) concurrent with other events. \$200 per team.
\$3,000 Winner, \$1,220 Finalist, \$610 Each Semi-Finalist (2)

U.S. OPEN CHAMPIONSHIPS

Conventional Format. No re-entries.

SAT., 4 P.M. — Registration - Auction - Random Draw - Start of Play

SUN., Noon — U.S. Open continues to conclusion. Consolations in all Divisions.

Open \$300 Advanced \$150 Int. \$80 Novice \$40 (85% return)
Main Event 80%, Cons. 20%, Winner 60%, Finalist 20%, Semi-Finalist (2) 10% Each

INTERNATIONAL BACKGAMMON ASSOCIATION MEMBERSHIP CATEGORIES

Life \$100 • One Year Regular \$20 • Six Month Trial \$10

TOURNAMENT HOTEL RATES — Single \$85 Double \$95

RESERVATIONS — TOLL FREE — 1-800-535-9595

IF AN OCCASION ARISES, A PLAYERS COMMITTEE WILL BE SELECTED, AND THEY WILL RESERVE THE RIGHT TO REFUSE ADMISSION OR DISQUALIFY ANYONE THEY FEEL IS OR WOULD BE DETRIMENTAL TO THE BEST INTERESTS OF THE TOURNAMENT. ANY PLAYER THAT IS DISQUALIFIED AFTER HE STARTS PLAY WILL NOT BE GIVEN A REFUND. A PLAYER MAY BE DISQUALIFIED FOR UNSPORTSMANLIKE CONDUCT AT ANY POINT IN THE TOURNAMENT.

Les Boyd, Director..... 305-527-4033



Las Vegas Tournament promoter Henry Wattson in a match with Wally Watson.



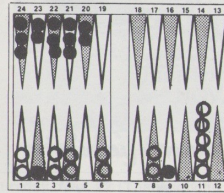
Don Parker plays Pierre Des Lauriers at Stratton Mt. as Joyce Parker and Jo Sherman contemplate the next move.



Russ Wright, Bruce Rand, Louise Goldsmith and Las Vegas Winner Ron Rubin.

BACKGAMMON

By JERRY NATHAN
Advanced level



White to play 2-2

In money games (but not in tournament matches) players may agree to use the Jacoby Rule, which scores gammons and backgammons as double and triple only when the doubling cube no longer is in the center.

Surely White had to use one of his 2s to hit on the 9-point. With the Jacoby Rule in force he would cube on his next turn no matter how he had played the rest of his roll Black was almost sure to drop unless he had rolled spectacularly from the bar.

Instead of giving Black two ways to roll 5-3 and make the 5-point, White

decided to hit the second blot with two men from his 4-point, playing his last 2 from the 9-point to the bar point. Black fanned with two men on the bar and dropped White's cube.

Without Jacoby, or with the cube already in Black's possession, White's play would have been reasonable. But with no way to score a gammon premium, White might better have hit with two checkers on the 9-point, bouncing with both to the bar point.

By hitting both men, White also gave Black two recovery rolls — double 5, a winning throw — and double 4 which would justify a take in view of Black's favorable race position.

On the other hand, the recommended move — hitting on the 9-point and proceeding with two men to the bar point — would prevent 5-5 from being a "killer roll". Furthermore, if Black were to accept the cube, White would have an effective block of the man or men on the 2-point and a safer position for entering his home table without having to leave blots.

Nathan's Notes

Winners of recent LaHacienda tournaments were: Marty Storer, Bruce Brown and Barry Davis (tied for first and second), and Jeff Whitelaw. In second place were Gary Griffin and Jerry Nathan. In third place were Bruce Brown (twice) and Alan Fenster.



SEA SHANTY
FAMOUS FOR FRESH FISH & SEAFOOD

The Wellington Backgammon Club (Inc.)



P.O. Box 10314
Wellington
New Zealand

We would welcome any USA backgammoners who happen to be heading for New Zealand. A telephone call on arrival to myself at Wellington 728-500 (business) or 793-974 (private) would obtain details of clubs and meeting nights which could be suitable. The standard of play down here isn't too bad and we believe we can provide worthy opponents. Perhaps a paragraph or two in the Backgammon Guide to let travellers know of us would be a good idea, if it can be arranged.

John D Philpott
PRESIDENT

Kind regards.



Lenny Loder vs. Bermudan Bud Litchfield as wife Carol observes.



Thelma Randall and Harriet Durham



Rocky Aoki of Benihana fame and Barbara Blumin.



Las Vegas Mike Maxakuli plays Bostonian Zinoviy Elinson at Stratton Mt.



ACKGAMMON



ROBLEM

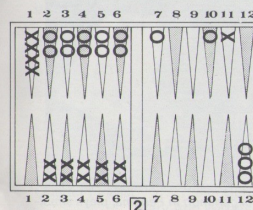
by Lewis Deyong

Excerpt from his «Philip Morris International Backgammon Book.»

The illustration shows a position where Black is a big favorite to win. In fact his only way of losing is to give a shot later and get hit. Even so, every player knows from bitter experience how often an unfortunate series of numbers can force Black to leave a blot in spite of the best and safest bearing off.

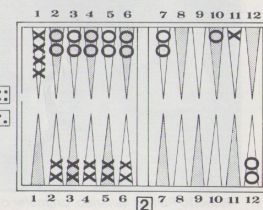
There is no foolproof method of bearing off safely, but one defensive tactic with rolls such as Black's 4-2 (above) will help considerably. The correct play for Black is to cover his own bar point without hitting White's open blot. Black should let White continue to move and the reason is simple.

O = BLACK
X = WHITE



(O rolls 4-2)
(Don't cut off a Fleeing Army)

SOLUTION



(O rolls 4-2)
(Don't cut off a Fleeing Army)



Canadian doubles team of Ed Simms and Gil Titley play Bud and Vie Whalen



Perry Gartner and Don Kandel



Roberto Ramon Vallarino, promoter of Backgammon in Panama, plays simultaneous exhibition against 20 boards. He is a member of the organizing committee of "Cerveza Panama" the promoter backgammon in Panama.

FLORIDA SUN COAST SARASOTA HOLIDAY INN APRIL 28, 1984

OPEN CHAMPIONSHIP

Winner Howard Ring
Finalist Randy Brown
Semi-Finalist Ed Petrillo
Semi-Finalist Mike Corbett

OPEN CONSOLATION

Winner Al Tesoro

ADVANCED

Winner Amy Mendelson
Finalist Dan Smith
Semi-Finalist Drew Giovanis
Semi-Finalist Andy Glazer
Quarter-Finalist Bob Ebbeler
Quarter-Finalist Allen Sandler
Quarter-Finalist Merv Eugene

ADVANCED CONSOLATION

Winner Ed Dove
Finalist Roland Leutert

INTERMEDIATE

Winner Chris Spieldenner
Finalist Bev Valens
Semi-Finalist Barbara Ramsey

INTERMEDIATE CONSOLATION

Winner take all
Winner Joe Raub

BEGINNERS

Winner Roger Maloof
Finalist Debbie McGirr

DOUBLES

Winner Sharon Gee
Finalist Joel Schiff
Finalist Ray Haskell
Semi-Finalist Drew Giovanis
Semi-Finalist Art & Amy
Semi-Finalist J.P. McGirr
Quarter Finalist Les Boyd
Quarter Finalist Howard Ring
Quarter Finalist Bill Rinz
Quarter Finalist Herb Friesner
Quarter Finalist Roland Leutert
Quarter Finalist Jim Burton
Quarter Finalist Mary Ann Wilkerson
Quarter Finalist Linda George
Quarter Finalist Bill Rinz

FLORIDA GOLD COAST TERRACES OF TURNBERRY JUNE 16-17, 1984

OPEN CHAMPIONSHIP

Winner Joel Schiff
Finalist Len Duvidiani
Semi-Finalist J.P. McGirr
Semi-Finalist Al Tesoro

CONSOLATION

Winner (split) Mike Corbett
Les Boyd

ADVANCED

Winner Stan Littlefield
Finalist Glenn Johnston
Round Robin Ed Koren
Round Robin 3-way split

ADVANCED CONSOLATION

Winner Jack Launonen

INTERMEDIATE

Winner Mike Walek
Finalist Steve Flan
Semi-Finalist Israel Zilonka
Semi-Finalist Tina Meyerson

INTERMEDIATE CONSOLATION

Winner Jose Lichi
Herb Mendelson, Malcolm Collins
Round Robin 3 way split

DOUBLES

Winner Debbie & Jim McGirr
Finalist Maddy Russell
Finalist Walter Fradin
Semi-Finalist Billie & Ed
Steinberg
Lowell Cushman & Bob Topkin

BEGINNERS

Winner Beverly Valen
Finalist Vicki Rash
Brooks McKeever

CONSOLATION

Winner Sandra Jester

PHOTOS

MALCOLM COLLINS
LES BOYD



Farm School Director, Dorothy Bates plays Bob Milardo



Kathy O'Neil watches Bob Bishop and Ed Goldstein.



Doubles team Perry Gartner and Annabel Nichols of Park 65 play Mike Nelson and Zinoviy Elinson of Boston.

FLORIDA WEST COAST SARASOTA FL HOLIDAY INN SEPTEMBER 1-3, 1984

OPEN CHAMPIONSHIP

Winner Dan Smith
Finalist Ralph Chafetz
Semi-Finalist Michael Corbett
Semi-Finalist Orrill Martin
Semi-Finalist Drew Giovanis

OPEN CONSOLATION

Winner Take All ... Randy Brown
Rick Rosenthal
Ray Haskell

ADVANCED CONSOLATION

Winner Marty Lesser
Don Roberts

ADVANCED

Winner Jerry Schneiderman
Finalist Merv Eugene

INTERMEDIATE

Winner Lynne Savelle
Finalist Paula Crouch
Semi-Finalist Francis Francke
Semi-Finalist Debbie Tomaszewski
Semi-Finalist Mike Berman

INTERMEDIATE CONSOLATION

Winner Scot Bennett
Jesse Morgan

DOUBLES

Winner Laura Mirsky
Ed Petrillo
Finalist Marsha Lynn
Amy Mendelson
Semi-Finalist Ralph Chafetz
Herb Mendelson
Semi-Finalist Don Roberts
Art Dickman

BEGINNERS

Winner Regina McCaffery

FLORIDA EAST COAST TURNBERRY FL SEPTEMBER 7-8, 1984

OPEN CHAMPIONSHIP

Winner Gene Gold
Finalist Al Tesoro
Finalist Herb Friesner
Semi-Finalist Stuart Dunkin
Semi-Finalist Rocky Aoki

OPEN CONSOLATION

Winner Arlene Channing
Leslie Stone, Grant Shaffer

ADVANCED

Winner Richard Doredant
Finalist Carole Feldman
Finalist Merv Eugene

ADVANCED

Winner Tim Shane
Ed Koren

INTERMEDIATE

Winner Mike Berman
Finalist Allan Sandler
Semi-Finalist Ralph Weintraub
Semi-Finalist Eleanor Hoffman

INTERMEDIATE CONSOLATION

Winner Alice Selwyn
Tina Myerson

DOUBLES A

Winner Jose & Alberto Lichi

DOUBLES B

Winner (split) ... Ralph & Marion
Mutchnik
& Ralph Chafetz & Marsha Lynn

BEGINNERS

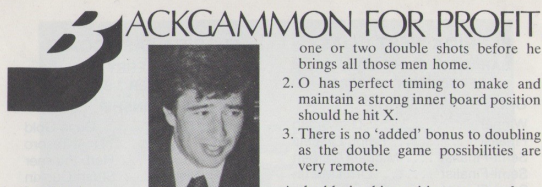
Winner Alicia Masdal
Finalist Marion Greenspan

CONSOLATION

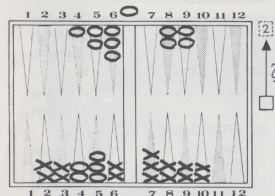
Winner Eleanor Goodman

NOTICE: the 1984 New Orleans Exposition will end Sunday, Nov. 11. We have booked our tournament the last 4 days of the fair. Nov. 8-11, 1984 Please call the Hotel Monteleone 1-800-535-9595 and make your reservations now.

DON'T GET SHUT OUT!



by Joe Dwek
(Extract from his book
published by Weidenfeld & Nicholson)
PROBLEM
Should X double?



The answer is no, for three reasons:

1. X is stripped of builders in his outer board and is quite likely to give at least

one or two double shots before he brings all those men home.

2. O has perfect timing to make and maintain a strong inner board position should he hit X.

3. There is no 'added' bonus to doubling as the double game possibilities are very remote.

A double in this position screams for a "beaver". A beaver is a refinement in the art of doubling. While beavers are never played in tournament backgammon, their use in other games is increasing rapidly. The beaver is explained very simply. If you think your opponent has given a poor double (let us assume from 1 to 2) under the beaver rule you have the right to turn the cube from 2 to 4 and keep it on your side provided you do so before your opponent rolls his number. The beaver, apart from being a furry rodent, is a powerful weapon to use against the premature doubler. If you are given an early double from 1 to 2 by beaver you increase the stake to 4 but still retain the advantage of having the cube on your side. Obviously you should beaver whenever you think that you have been doubled in an even position or one where you have the advantage.

METROPOLITAN OPEN LOEW'S SUMMIT N.Y.C. MAY 26, 1984

OPEN CHAMPIONSHIP

Winner Ed O'Laughlin
Finalist Ben Khaloyan
Semi-Finalist Don Kandel
Semi-Finalist Bob Bishop
Semi-Finalist Mike Nelson

OPEN CONSOLATION

Winner Doug Roberts
Joe DiNardo, Irwin Zamore

ADVANCED

Winner (split) Bob Bieder
VT Bear, Lenny Loder
Semi-Finalist Vera De Rach-
evsky, Roland Leutert, Dennis Victor

ADVANCED CONSOLATION

Winner Roland Leutert
Rita Simon

INTERMEDIATE

Winner Shirley Joseph
Finalist Harry Dushey
Semi-Finalist Ignacio Francis
Semi-Finalist Rosalie Frank

INTERMEDIATE CONSOLATION

Winner Ed Pavlonis

BEGINNERS

Winner (split) Betty Innella
Marcy Cohen
Semi-Finalist Kathy O'Neill
Semi-Finalist Susan Carey

CONSOLATION

Winner (split) Tony Mentzel
Howard Pasternak

FLORIDA STATE CHAMPIONSHIPS TERRACES OF TURNBERRY MIAMI, FLORIDA MAY 1-3, 1984

OPEN CHAMPIONSHIP

Winner Joel Shiff
Finalist Marsha Lynn
Semi-Finalist Al Tesoro
Semi-Finalist Laura Mirsky

OPEN CONSOLATION

Winner Charles Hesser

ADVANCED CONSOLATION

Winner (split) Ron Glantz
Lois Goodman

ADVANCED

Winner David Thomas
Finalist Richard Doredant
Finalist Lenny Dudivani
Semi-Finalist Sharyn Gee
Malcolm Collins, Tim Shane

JACKPOT

Winner Al Tesoro
Finalist Charles Hesser

INTERMEDIATE

Winner Dahlia Attia
Finalist Israel Zilonka
Ron Goetz

Semi-Finalists (3)

Gladys Richard, Tina Myerson
Seymour Rosenberg

INTERMEDIATE CONSOLATION

Winner (split) Tina Meyerson
George Guregian

BEGINNERS

Winner Marion Greenspan
Finalist Earl Underwood

CONSOLATION

Winner Phyllis Talenfeld

DOUBLES

Winner Finals (split)
Jim Pasko & Polly
Laura Mirsky & Ed Petrillo
Semi- Lowell Cushman & Carolyn
Semi-Charles Hesser & Bob Topkin

NEW YORK OPEN LOEW'S SUMMIT N.Y.C. MAY 27, 1984

OPEN CHAMPIONSHIP

Winner Mike Nelson
Finalist Ben Khaloyan
Semi-Finalist Don Kandel
Semi-Finalist Perry Gartner

DOUBLES

Winner Mort Bader
Bob Cowley
Finalist Alan Grunwald
Joe Neiman

OPEN CONSOLATION

Winner Bob Bishop
Finalist Joe Dinardo

ADVANCED

Winner Courtney Nelson
Finalist Mark Merado
Semi-Finalist Ami Tannenbaum
Semi-Finalist Bruce Hall

ADVANCED CONSOLATION

Winner Bob Bieder
Dave Gustin

INTERMEDIATE

Winner (split) Joe Clark
Mark Denihan
Semi-Finalist Henry Tibery
Semi-Finalist Mort Bader

INTERMEDIATE CONSOLATION

Winner Farshid Firovztale

BEGINNERS

Winner Marcy Cohen
Finalist Max Sternberg

CONSOLATION

Winner John Bieder

RAMWELL MATCHES offers
backgammon matches of the
best players at affordable
prices. Quantity discounts.
Write for a complete price list
with a sample match.

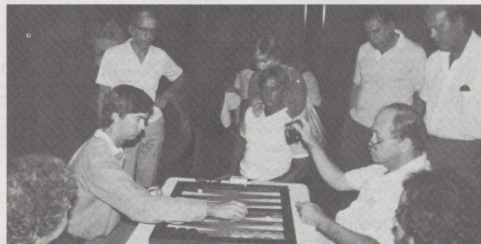
RAMWELL MATCHES
P.O. BOX 40746
Indpls. IN 46240



Granite State Tournament Director, Steve Avery in a match with Moshe Horowitz. Don Kandel plays Bob Hill.



Las Vegas Amateur winner Jack Kissane plays Chicago winner Darrell Marcus in quarter finals at Vermont.



Dan Smith and Ralph Chafetz play Sarasota Finals as Marty Lesser, Bob Wright, Herb Mendelson and Ray Haskell watch.

NEW YORK STATE NYC SUMMIT HOTEL SEPTEMBER 14-15, 1984

OPEN CHAMPIONSHIP

Winner Ron Weingrad
Finalist Bob Cowley
Semi-Finalist Doug Roberts
Semi-Finalist Jack Amiel

INTERMEDIATE

Winner Joe Clark
Finalist Henry Tibery
Semi-Finalist Taylor Sage
Semi-Finalist Mortimer Bader
Semi-Finalist Randi Sachar

ADVANCED

Winner (split) Bob Bieder
Finalist Antoinette Williams
Semi-Finalist Ricardo Epps
Semi-Finalist Mark Merado

BEGINNERS

Winner Julian Steiner
Winner Barbara Barnett
Finalist Blumin
Finalist Adriano Buzzi

By LUTHER EVANS
Herald Turf Writer

Wilbur Brewton, attorney-lobbyist for Calder Race Course, walked into Gov. Bob Graham's office in Tallahassee at 11:20 a.m. Wednesday with a pari-mutuel package bill in his hand and said:

"Governor, Calder opens at 1 p.m. We would appreciate it if you would sign this bill."

By 11:23 a.m., Gov. Graham had signed the bill that Calder President Kenny Noe Jr. now says will increase purses by nearly \$2 million at the 122-day summer meeting that began Wednesday.

The legislation, passed overwhelmingly Monday in the Senate and Tuesday in the House, boosts the takeout from a bettor's dollar from 20 percent to 23 percent on the daily double, perfectas and trifectas. The takeout on straight betting remains at 20 percent.

NEW JERSEY NYC SUMMIT HOTEL SEPTEMBER 16, 1984

OPEN CHAMPIONSHIP

Winner Gene Gold
Finalist Zinoviy Elinson
Semi-Finalist Annabel Nichols
Semi-Finalist Al Hodis

OPEN CONSOLATION

Winner Lee Genuid

DOUBLES

Winner Mike Nelson
Steve Keats
Finalist Dennis Victor
Dick Nottoli

INTERMEDIATE

Winner Randi Sachar
Finalist Randy Rothchild

INTERMEDIATE CONSOLATION

Winner Taylor Sage

ADVANCED

Winner Ricardo Epps
Finalist Joe Clark

CONSOLATION

Winner Andres Blanco

BEGINNERS

Winner Marilyn Daly
Finalist Rich Rahmey

BEGINNERS CONSOLATION

Winner Julian Steiner

International Backgammon Assn.
1300 Citrus Isle
Ft. Lauderdale, Fla. 33315
(305) 527-4033

☐ 1 year regular (New Members) \$20.00
Includes magazine

☐ Life (No Dues) \$100.00
☐ Magazine only - 8 issues \$10.00

MEMBERSHIP APPLICATION

Mr _____
Ms _____
(please print full name)

Address _____ Apt. _____

City _____ State _____ Zip _____



Quarter Finals Match - Dennis Victor & Darrell Marcus



Linda MacLean & Eric Packer go at it on terrace at Stratton Mtn. Inn.



Wally Watson (golf trophy winner), Jack Kirsane, Doug Roberts



Mike Nelson, V.T. Bear, Bud & V.I. Whalen - Doubles Match



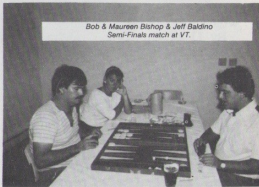
Katharine Snape (tennis tournament winner) & Taylor Sage



Joe DiNardo, Ron Wertheim, Perry Gartner, Jeff Baldino, Norma Gartner & Wally Watson discuss a play.



Debbie McGin, Taylor Sage, Ed Simms, Kelly Willoughby Matches in Progress



Bob & Maureen Bishop & Jeff Baldino Semi-Finals match at 17

LAST AND FIRST

TOURNAMENT
OF 1984
SAT-SUN., DEC. 29-30, 1984

The winner of this tournament is guaranteed a minimum of \$6,000 and will be considered the world's best player for the rest of the year.

TOURNAMENT
OF 1985
TUES., JAN. 1, 1985

The winner of this event will reign longer than any other Champion in 1985.

LOEWS SUMMIT

51ST STREET & LEXINGTON AVENUE • NEW YORK, N.Y. 10022
(212) 752-7000

LAST TOURNAMENT OF 1984: Saturday, 2 P.M., Random draw and start of play. Registrations and re-entries will continue Saturday until 10 P.M., and Sunday from noon to 5 P.M. Preliminary qualifying sessions. Staggered starting times. Advance registrations are not accepted. Contestants should register when they are available for play any time Sat. or Sun., whichever day is most convenient. Early starters have more opportunities to re-enter SECOND CHANCE. SECOND CHANCE re-entries is a feature which enables those eliminated in the preliminary rounds another chance at all the top prizes.

SUNDAY Noon to 2 P.M. Brunch at Loew's Maude's Restaurant

SUNDAY 7 P.M. PLAYOFFS commence after re-draw of qualified players and auction. Play will continue to conclusion.

| | Open | Advanced | Intermediate | Novice |
|--------------|------|----------|--------------|--------|
| Entrance Fee | 250 | 100 | 60 | 30 |
| re-entry | 100 | 30 | 20 | 10 |

50% TO PLAYERS POOL

100% of Initial Entrance Fees returned to eventual winners.

Winner 60%, Finalist 20%, Semi-Finalist (2) 10% Each

Advanced, Intermediate and Novice prize distribution determined by number of entrants
No consolations

There will be a one-time \$10/person charge to cover coffee, tea, **Sunday Brunch at Maude's.**
MONDAY, Dec. 31 - 2 P.M. to 8 P.M. Doubles tournament \$200 per team (32 team limit) 85% return. Winner \$3000, Finalist \$1220, Semi-Finalist (2) \$610 each

FIRST TOURNAMENT OF 1985: Tuesday, 2 P.M., January 1, 1985. FIRST tournament commences after auction. Conventional format, random draw. Contestants that lose their main event match will be entered immediately into consolation at no added cost.

Open \$200, Advanced \$100, Intermediate \$60

85% Return, 80% Main Event, 20% Consolation
Winner 60%, Finalist 20%, Semi-Finalist (2) 10% each

There Will Be A Wine & Cheese Party

New Years Eve starting at 11 p.m.

HOTEL RATES: Single \$60/Double \$65

INTERNATIONAL BACKGAMMON ASSOCIATION MEMBERSHIP CATEGORIES
Life \$100 One Year Regular \$20 Six-Month Trial \$10